



Guldasta

vol 13



ॐ bhkala



2141

This royal heir ensemble traces the embroidery of lavish colours synonymous with the royal subcontinent.
Artistically executed intricate embroidery makes it visually stupendous.





ॐ bhkala



2142

A burst of fresh air comes alive in the form of this green ensemble, while the intricately handwoven embroidery brings to life the glory and vibrant history of the intricate patterns.





ॐ bhkala

Pretty women in this world wear a little sparkle, some in their dress, and some in their eyes. This dreamy lehenga is embellished with beautiful work.



2143





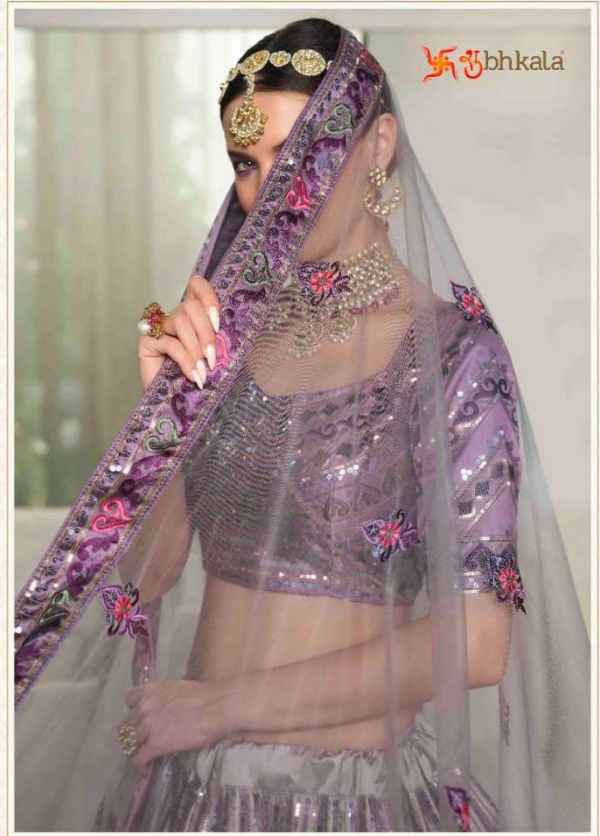
ॐ bhkala

2145

Brought to life by some of the loveliest yet breathtaking fabrics. This outfit is one of our favorites because there's something so calming and liberating about the colour palette and the intricate work!









| Design NO. (SKU) | Color Lehenga – Choli – Dupatta | Lehenga Fabric | Choli Fabric | Dupatta Fabric | Size (Semi-Stitched) | Lehenga & Belt Work | Choli Work | Dupatta Work | Choli Length MTR (UN-STITCHED) | Lehenga Length MTR (SEMI-STITCHED) | Dupatta Length MTR | Weight |
|------------------|------------------------------------|----------------|--------------|----------------|------------------------|---------------------------------------|---------------------------------------|---------------------------------------|--------------------------------|------------------------------------|--------------------|--------|
| 2141 | Teal Blue | Silk | Silk | NET | UPTO 42 BUST AND WAIST | Thread With Sequince Embroidered Work | Thread With Sequince Embroidered Work | Thread With Sequince Embroidered Work | 1 MTR | 42 INCH | 2.40 MTR | 2.5 KG |
| 2142 | White – Green – White | Silk | Silk | NET | UPTO 42 BUST AND WAIST | Thread With Sequince Embroidered Work | Thread With Sequince Embroidered Work | Thread With Sequince Embroidered Work | 1 MTR | 42 INCH | 2.40 MTR | 2.5 KG |
| 2143 | Violet | Silk | Silk | NET | UPTO 42 BUST AND WAIST | Thread With Sequince Embroidered Work | Thread With Sequince Embroidered Work | Thread With Sequince Embroidered Work | 1 MTR | 42 INCH | 2.40 MTR | 2.5 KG |
| 2144 | Peach | Silk | Silk | NET | UPTO 42 BUST AND WAIST | Thread With Sequince Embroidered Work | Thread With Sequince Embroidered Work | Thread With Sequince Embroidered Work | 1 MTR | 42 INCH | 2.40 MTR | 2.5 KG |
| 2145 | Deep Pink | Silk | Silk | NET | UPTO 42 BUST AND WAIST | Thread With Sequince Embroidered Work | Thread With Sequince Embroidered Work | Thread With Sequince Embroidered Work | 1 MTR | 42 INCH | 2.40 MTR | 2.5 KG |
| 2146 | White – Deep Pink | Silk | Silk | Silk | UPTO 42 BUST AND WAIST | Thread With Sequince Embroidered Work | Thread With Sequince Embroidered Work | Thread With Sequince Embroidered Work | 1 MTR | 42 INCH | 2.40 MTR | 2.5 KG |
| 2147 | Dusty – Purple | Silk | Silk | Silk | UPTO 42 BUST AND WAIST | Thread With Sequince Embroidered Work | Thread With Sequince Embroidered Work | Thread With Sequince Embroidered Work | 1 MTR | 42 INCH | 2.40 MTR | 2.5 KG |

THIS BOOK / CATALOGUE / LOGO / ARE PROTECTED UNDER COPYRIGHT ACT.

AN INLEGAL/UNAUTHORIZED REPRINT, PUBLISHING, REPRODUCTION, DISTRIBUTION AND MODIFICATION OF ANY IMAGES, PHOTOGRAPHS AND PRODUCTCS, TOTALLY OR IN PART, FOR ANY PURPOSE, REASON OR CAUSE IS STRICTLY PROHIBITED AND PUNISHABLE UNDER LAW.



2141



2142



2145



2146



2143



2144



2147

